



# **SWINE BREED CLASSIFICATION GUIDELINES FOR 2024**

## **Wyoming State Fair General Information and Policies**

Please reference pages 21-22 in the Wyoming State Fair Premium Book for the complete Youth Livestock Show policies.

For general information regarding Youth Market Swine, please reference the Wyoming State Fair Premium Book, pages 50-53. Youth Market Swine policies and class numbers can be found on page 51.

**Policies:** Classes are created to support breed registry standards that also ensure opportunity for all 4-H and FFA members to compete while using entry numbers and show trends in classes creation.

### CLASS:

- Berkshire
- Chester White
- Duroc
- Hampshire
- Hereford
- Landrace
- Poland China
- Spotted
- Yorkshire
- Dark Crossbred
- Light Crossbred
- AOB Dark
- AOB Light

## **Wyoming State Fair Breed Classification Policy**

A classification committee comprised of three individuals will visually determine each appropriate class entry. Registration papers, breeder affidavits, or other factors WILL NOT be considered by committee members. Animals are not disqualified from participating as a result of the classification.

Committee members each apply their opinion to anonymously vote using colored chips. At least 2 blue colored chips indicate the committee agrees with the breed classification entry. At least 2 red colored chips indicate disagreement with the breed classification entry. If at least 2 red chips are presented, the committee will convene to determine whether the animal should be moved into another breed class or the crossbred class. A second vote will be held resulting in final class entry eligibility.

*Note:* Classifiers are appointed by WSF to assist WSF by exercising their judgement for class placement. Their decision is final with no appeals. To aid in understand breed standards, 4-H and FFA members should review and understand breed association standards.

**CLASSIFICATION TERMS:**

**Ideal:** Characteristics in combination that most accurately represent the breed.

**Acceptable:** Characteristics that represent the breed.

**Discriminatory:** Characteristics that are not reason for absolute disqualification but in combination with other discriminatory visual characteristics could lead to removal from a breed division.

**Absolute Disqualifications:** Unfavorable visual characteristics resulting in removal from a breed division.

## **BERKSHIRE**

### **Ideal**

1. Predominantly black possessing Berkshire breed character with regards to skull shape and ear shape.
2. A Berkshire should have six white points: nose, each leg/foot and at end of tail (unless tail is docked).
3. Erect ears.

### **Acceptable**

1. An occasional splash of white skin/hair may appear on the body.
2. Three of the four legs/feet must be white.
3. Ear can have white on it (not full coverage).
4. Red or fawn hair, if over black or white skin pigmentation.
5. Ear deformity/ear folded in a backwards position towards hog's body (crinkled ear).

### **Discriminatory**

1. Gray pigmentation on the body (spotting or mottling pattern).
2. Moderate amount of white skin splashes.

### **Absolute Disqualification**

1. Solid white or solid black face from base of ear forward.
2. Solid black nose (white does not break rim of nose).
3. Solid white ear.
4. Excessive white on the body.
  - a. Full coverage of white coming up the lower one-third of the body (not including legs) that extends from the base of the jaw through sternum and lower body through seam of the ham.
  - b. White splash extends from rear leg to upper hip.
5. White skin or hair that continuously encircles the body anywhere between the base of the ear and the base of the tail.
6. Any evidence of belt formation on the body.
7. Lacks breed character with regards to skull and/or ear shape.
8. Any evidence of physical tampering that would alter breed character.

## **CHESTER WHITE**

### **Ideal**

1. Solid white in color possessing Chester White breed character.
2. Medium sized ears are down when hog is in a relaxed position.

### **Acceptable**

1. Ear deformity/ear folded in a backwards position towards hog's body (crinkled ear).

### **Discriminatory**

1. Partially erect/level ear.
2. Skin pigmentation.

### **Absolute Disqualification**

1. Erect ears.
2. Colored hair.
3. Color on the skin, cumulatively larger than a U.S. minted silver dollar.
4. Any evidence of physical tampering that would alter breed character.

## **DUROC**

### **Ideal**

1. Must be red in color, possessing Duroc breed character.
2. Ears are down when hog is in a relaxed position.

### **Acceptable**

1. Acceptable colors range from light red to dark brown.
2. Ear deformity/ear folded in a backwards position towards hog's body (crinkled ear).

### **Discriminatory**

1. Minimal amounts of black hair.
2. Black spots on the skin under two inches in diameter.
3. Partially erect/level ears.

### **Absolute Disqualifications**

1. Excessive amounts of black hair.
2. White hair.
3. White skin on the body or legs, or that extends over the rim of the nose.
4. Four (4) or more black spots on the skin, any of which are larger than two (2) inches in diameter.
5. Evidence of a belt.
6. Erect ears.
7. Any evidence of physical tampering that would alter breed character.

## **HAMPSHIRE**

### **Ideal**

1. Black in color with a full white belt over the shoulders encompassing both front legs/feet.
2. Possess Hampshire breed character with regards to skull shape and ear shape.
3. Erect ears.

### **Acceptable**

1. Black head with a white body, with evidence of pigment and freckling down the top.
2. White belt starting on a front foot/leg; belt partially encircles body extending to at least the chest floor (half belt).
3. Freckling in the belt.
4. Ear deformity/ear folded in a backwards position towards hog's body (crinkled ear).

### **Discriminatory**

1. Large spots within the belt.
2. Belt is in front of or behind a solid black front leg.
3. If belt v's and progresses towards the poll (base of the ear).
4. White tip on tail, if docked.
5. White on rear leg extends to the base of the ham.

### **Absolute Disqualification**

1. Streaking or evidence of white on forehead.
2. White skin extends over the rim of the nose.
3. When mouth is closed, the white under the chin cannot exceed what a U.S. minted quarter will cover.
4. Black head with a white body without freckles or pigmentation.
5. Belt extends past the sheath (sheath must be black).
6. Excessive frosting or white hair outside the belt.
7. Red hair.
8. Droopy or floppy ears.
1. Any evidence of physical tampering that would alter breed character.

## **HEREFORD**

### **Ideal**

1. Body must be red (light or dark), with deep red preferred with a white head, and white legs with white showing not less than one inch above the hoof.
2. 2/3 of the body is red and no more than one third white hair (except for the head and feet).
3. Majority of the face (51% or more) is white, both skin pigment and hair.
4. Ears break forward and down.

### **Acceptable**

1. 50% of a red body.
2. Underline of animal can be red or white.
3. At least two feet being white.
4. One or both ears being red.

### **Discriminatory**

1. Some red on the head.
2. Ears at least breaking forward.

### **Absolute Disqualification**

1. Evidence of a white belt.
2. Erect ears.
3. Fully red head.
4. Five (5) or more black spots larger than one inch diameter, or any one (1) spot exceeding three inches in diameter.
5. Yellow skin pigment and hair, roan color pattern, and gray/silver hair on the body.
6. Swirl patterns.
7. Any evidence of physical tampering that would alter breed character.

## **LANDRACE**

### **Ideal**

1. Must be solid white possessing Landrace breed character.
2. Large ears that droop and slant forward coming to a sharp point.

### **Acceptable**

1. Ear deformity/ear folded in a backwards position towards hog's body (crinkled ear).

### **Discriminatory**

1. Short rounded ears.
2. Short snout mimicking that of a Chester White.

### **Absolute Disqualification**

1. Erect ears.
2. Any hair color other than white.
3. More than 3 spots of skin pigmentation; each individual spot cannot be larger than a U.S. minted quarter.
4. Any evidence of physical tampering that would alter breed character.

## **POLAND CHINA**

### **Ideal**

1. Predominantly black possessing Poland China breed character.
2. A Poland China should have six white points: nose, each leg/foot and at the end of the tail (unless tail is docked).
3. Ears are down when hog is in a relaxed position.

### **Acceptable**

1. A slight continuation of white from the legs to the body.
2. Ear may have white on it.
3. Three of the four legs must be white.
4. May have an occasional splash of white on the body.
5. Hair and skin texture can vary from coarse to thin, and color can vary from dark black to ashy/pale.
6. Ear deformity/ear folded in a backwards position towards hog's body (crinkled ear).

### **Discriminatory**

1. Partially erect/level ears.
2. A moderate continuation of white from the legs to the body.
3. Moderate freestanding white, not attached to a leg.

### **Absolute Disqualification**

1. Erect ears.
2. Solid white or solid black face.
3. More than one solid black leg.
4. If the white on a solid white ear goes past the base of the ear.
5. An excessive continuation of white from the legs, encompassing the upper hip or shoulder.
6. Excessive freestanding white, not attached to a leg.
7. Evidence of belt formation.
8. Red or sandy hair.
9. Any evidence of physical tampering that would alter breed character.

## **SPOTTED**

### **Ideal**

1. Must be black and white, possessing Spotted breed character.
2. Ears are down when hog is in a relaxed position.

### **Acceptable**

1. Predominantly black with white spots or predominantly white with black spots.
2. Ear deformity/ear folded in a backwards position towards hog's body (crinkled ear).

### **Discriminatory**

1. Partially erect/level ears.
2. Moderate brown spots.

### **Absolute Disqualification**

1. Erect ears.
2. Solid black head from base of ears forward.
3. Distinct white belt pattern (hair or skin) encircling and extending down and onto each shoulder.
4. Red hair.
5. Excessive brown spots.
6. Any evidence of physical tampering that would alter breed character.



## **YORKSHIRE**

### **Ideal**

1. Must be completely white in color possessing Yorkshire breed character.
2. Erect ears.

### **Acceptable**

1. Ear deformity/ear folded in a backwards position towards hog's body (crinkled ear).

### **Discriminatory**

1. Excessively large or wavy ears.
2. Color pigmentation (on body):
  - a. Two individual pigmentation spots of which neither can be larger than a U.S. minted dime.
  - b. One pigmentation spot cannot be larger than a U.S. minted quarter.

### **Absolute Disqualification**

1. Any hair color that is NOT white.
2. Broken/down ears.
3. Combined pigmentation spots that exceed a U.S. minted silver dollar.
4. Any series of dots that indicate masking.
5. Any evidence of physical tampering that would alter breed character.

## **CROSSBRED**

### **Light Cross:**

1. Any Crossbred pig that doesn't meet the Dark Cross classification.

### **Dark Cross:**

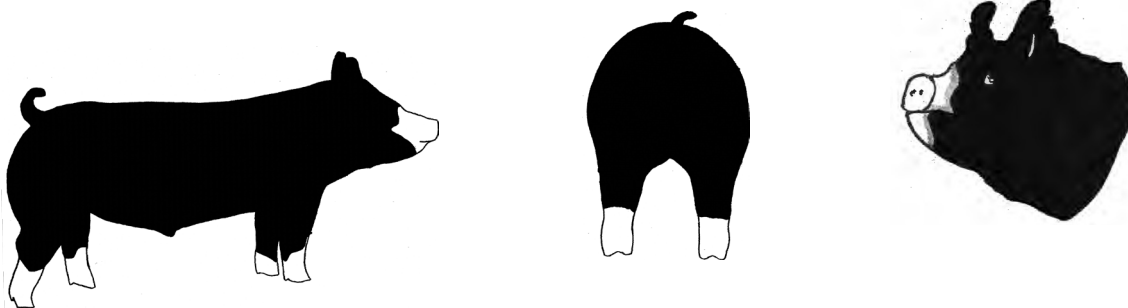
1. Barrows with black and/or red pigmentation (NOT blue, gray, sandy, rusty, orange or roan) comprising at least 10% of the total body area, shall be considered Dark Cross.
2. Barrows may be black or red belted, black/red patched or spotted.

Barrows with only blue, gray, sandy, rusty and orange pigmentation are NOT considered Dark Crosses.

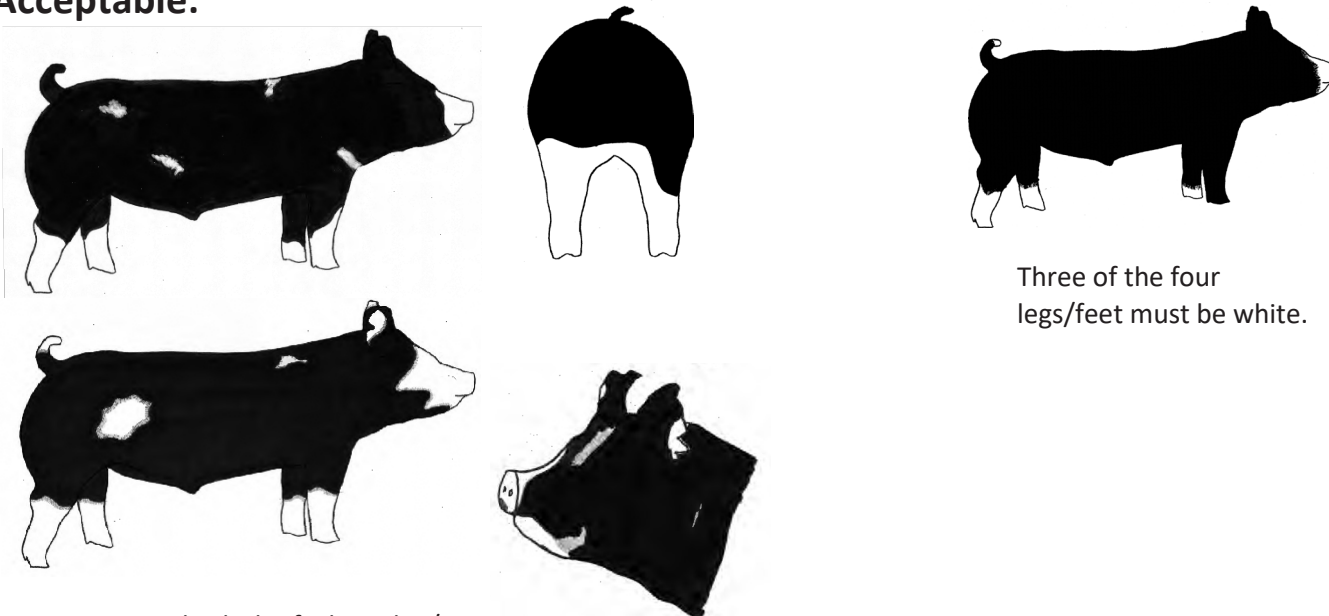
# Berkshire

# Breed Classification Guidelines

## Ideal:



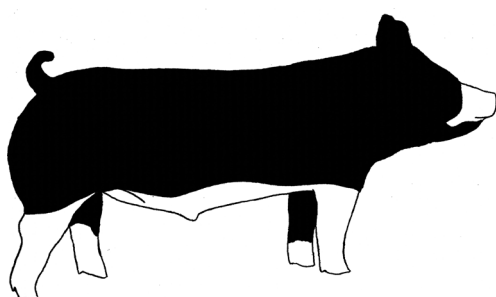
## Acceptable:



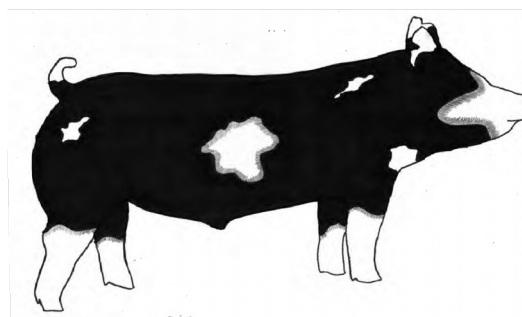
Three of the four legs/feet must be white.

An occasional splash of white skin/hair may appear on the body.

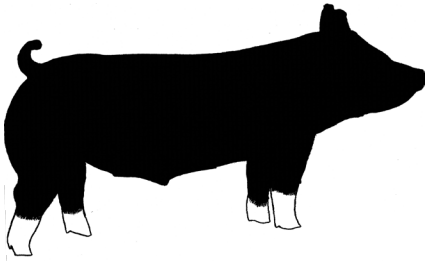
## Discriminatory:



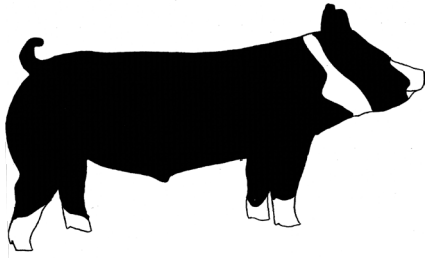
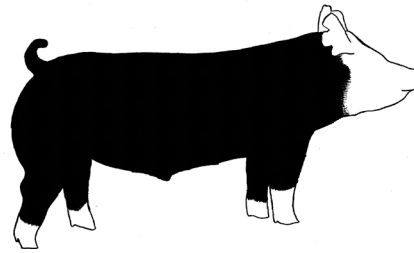
Moderate amount of white skin splashes.



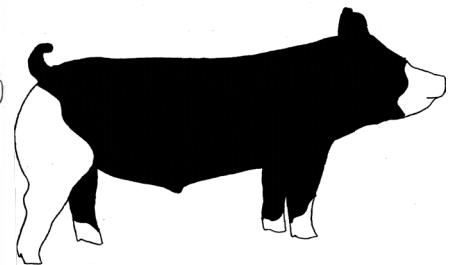
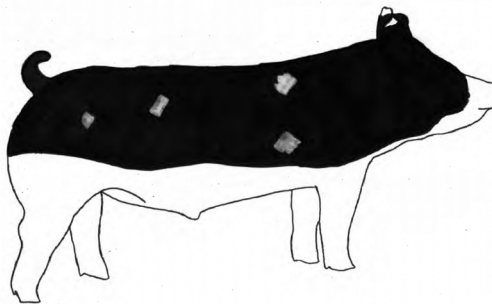
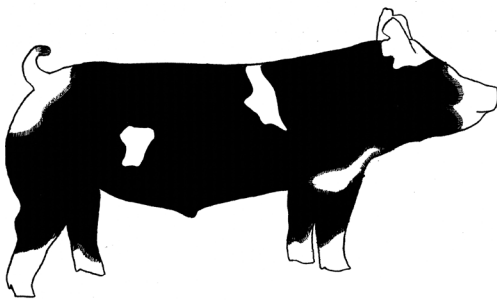
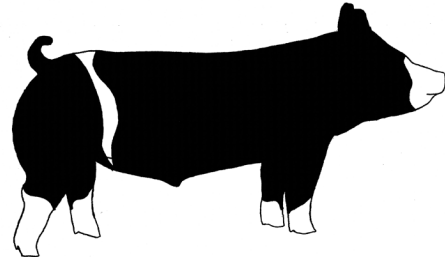
# Absolute Disqualification:



Solid white or solid black face from the base of the ear forward.



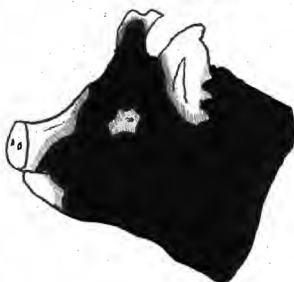
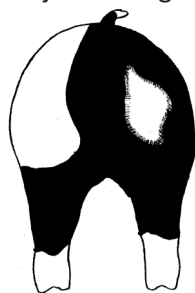
White skin or hair that continuously encircles the body anywhere between the base of the ear and the base of the tail.



Excessive white on the body.

a. All coverage of white coming up the lower one-third of the body (not including legs) that extends from the base of the jaw through sternum and lower body through seam of the ham.

b. White splash extends from rear leg to upper hip.



Solid white ear.



Solid black nose (white does not break the rim of the nose).



Lacking Berkshire breed character with regards to skull shape and ear shape.

**Chester White**

**Ideal**



**Discriminatory:**



**Absolute Disqualification:**



**Duroc**

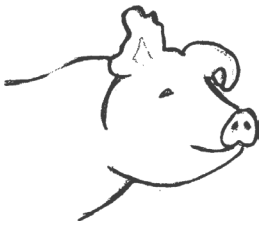
**Ideal:**



**Discriminatory:**

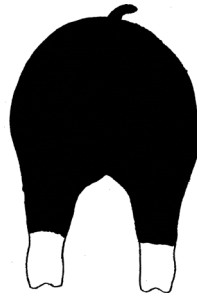
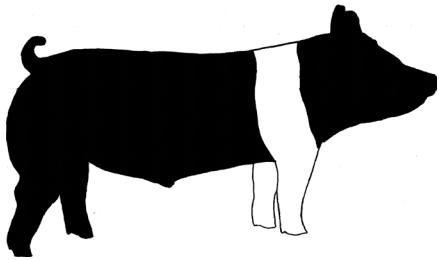


**Absolute Disqualification:**

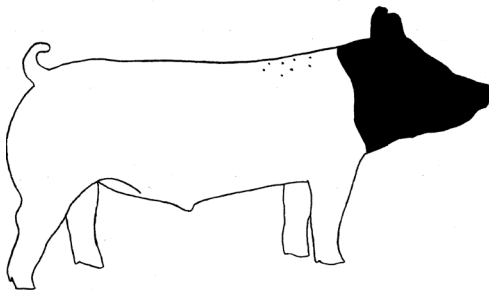


# Hampshire

## Ideal

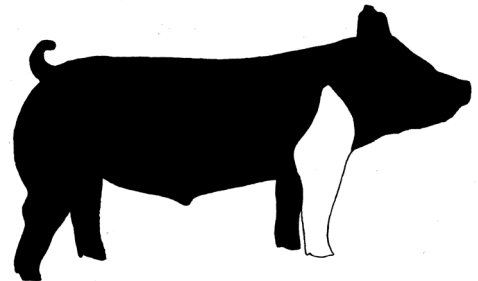


## Acceptable:

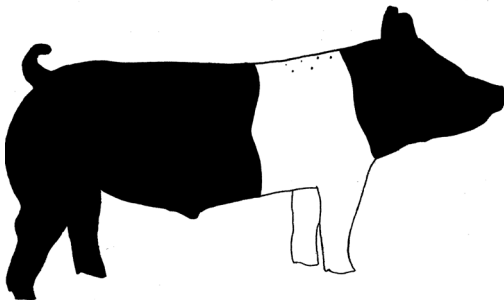


Black head with a white body, with evidence of pigment and freckling down the top.

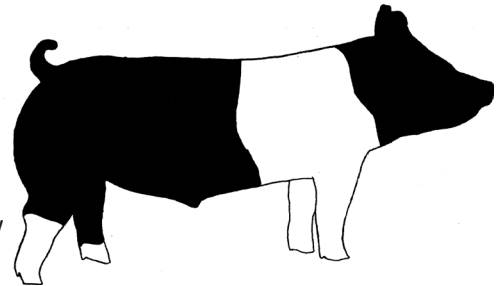
White belt starting on a front foot/leg; belt partially encircles body extending to at least the chest floor (half belt).



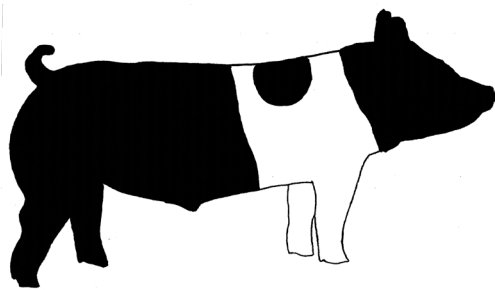
Freckling in the belt.



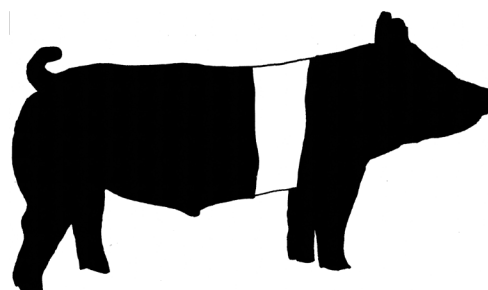
White on rear leg is below the base of the ham.



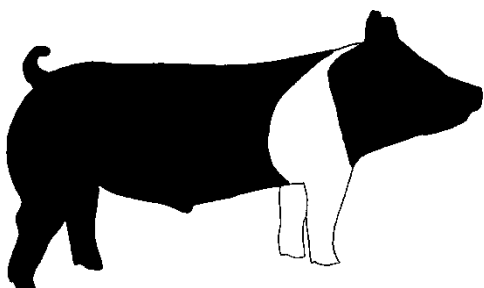
**Discriminatory:**



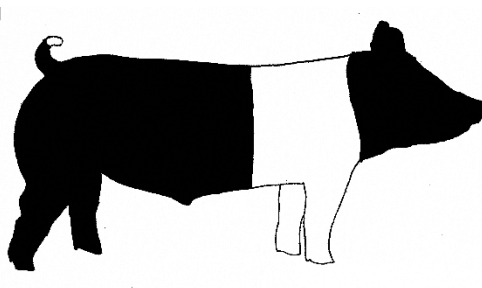
Large spots within the belt.



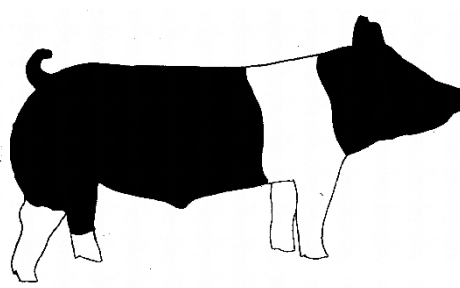
Belt is in front of or behind a solid black front leg.



If belt v's and progresses towards the poll (base of the ear).



White tip on tail, if docked.



White on rear leg extends to the base of the ham.

## Absolute Disqualification:



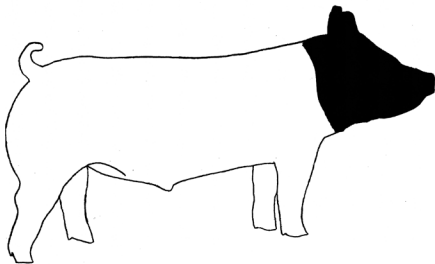
Streaking or evidence of white on forehead.



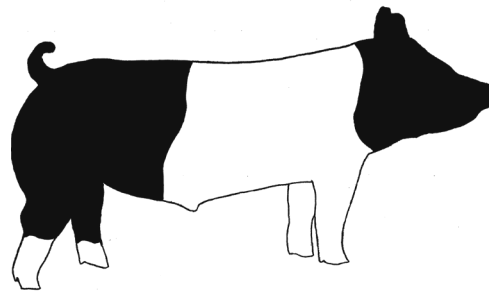
White skin extends over the rim of the nose.



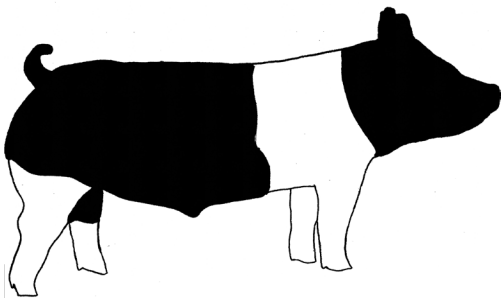
White under the chin cannot exceed what a U.S. minted quarter will cover.



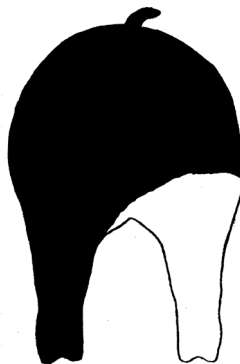
Black head with a white body without freckles or pigmentation.



Belt extends past the sheath (sheath must be black).



White on rear leg extends above the base of the ham.

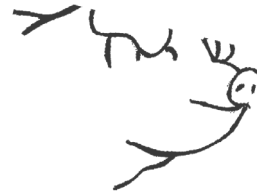




**LANDRACE  
IDEAL**



**Discriminatory:**

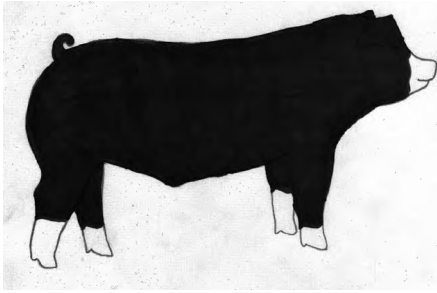


**Absolute Disqualification:**



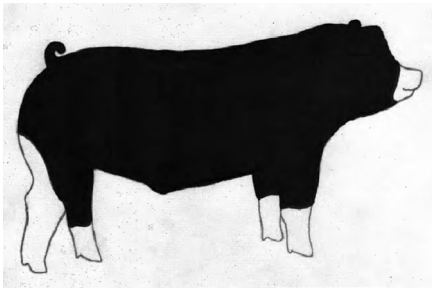
## Poland China

**Ideal:**

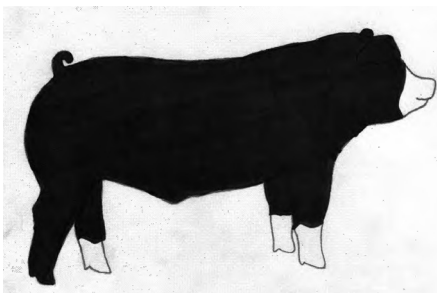


**Discriminatory:**

**Acceptable:**

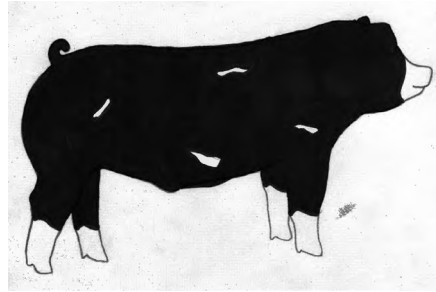
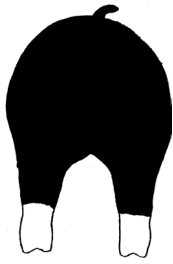


A slight continuation of white from the legs to the body.



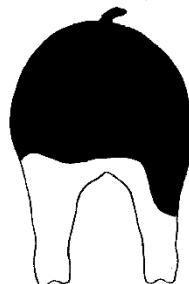
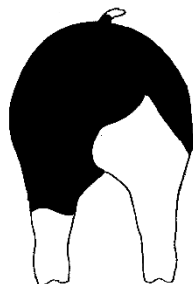
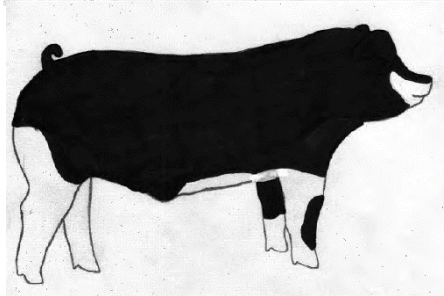
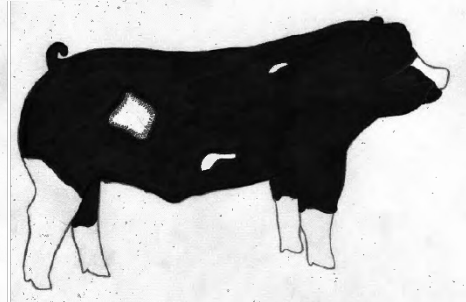
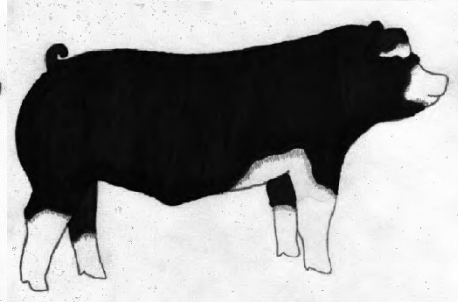
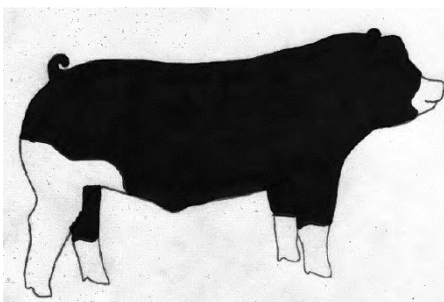
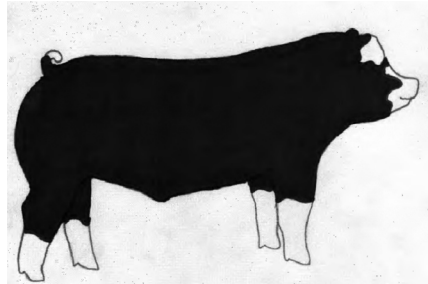
Three of the four legs must be white.

# Poland China



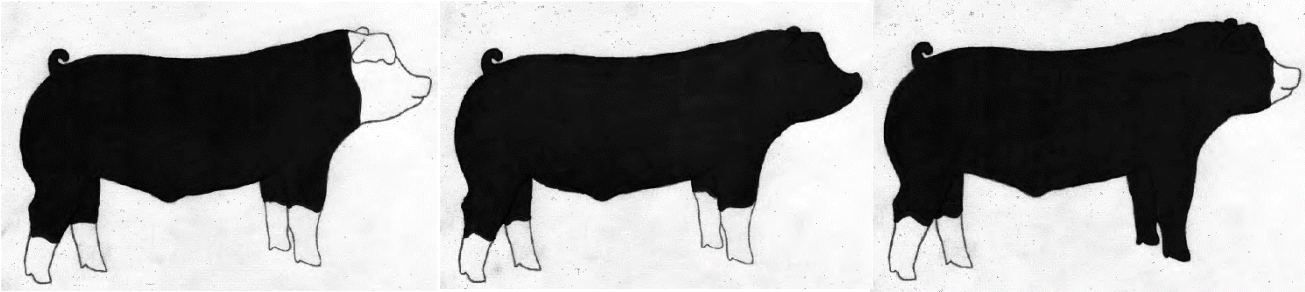
May have an occasional splash of white on the body.

Ear may have white on it.



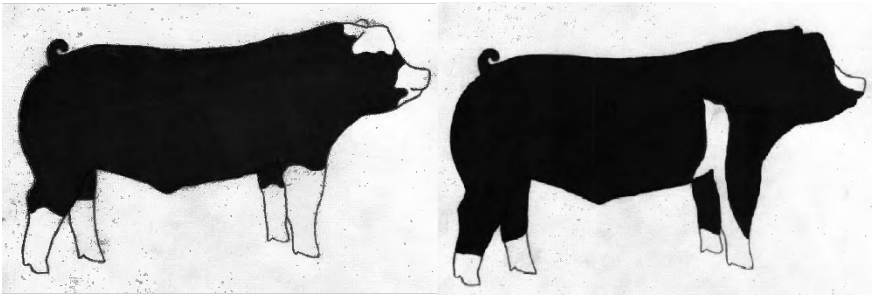
A moderate continuation of white from the legs

## Absolute Disqualification:



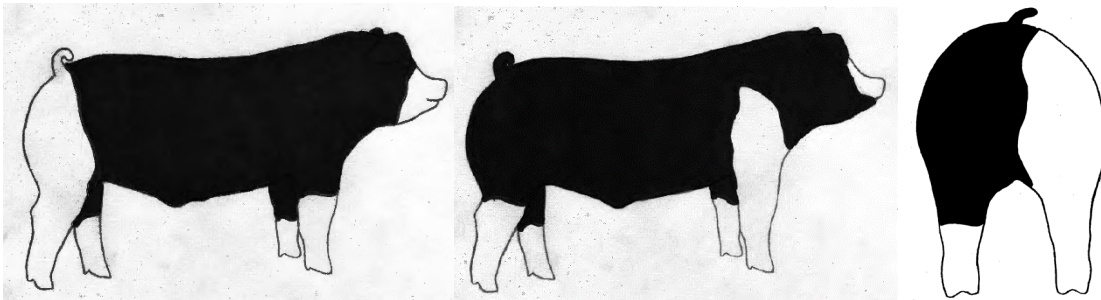
Solid white or solid black face.

More than one solid black leg.

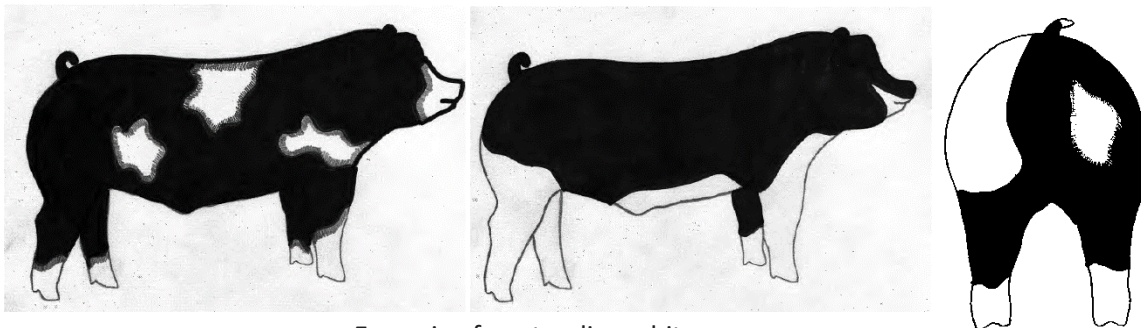


If the white on a solid white ear goes past the base of the ear.

Evidence of belt formation.



An excessive continuation of white from the legs, encompassing the upper hip or shoulder.



Excessive freestanding white, not attached to a leg.

# Poland China & Spotted

Ideal:



Discriminatory:

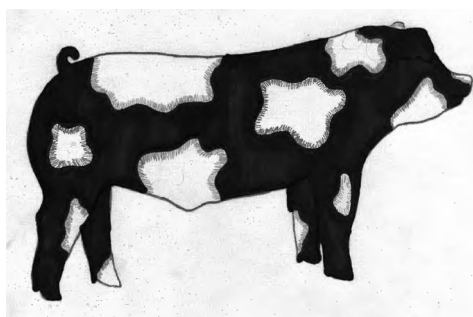
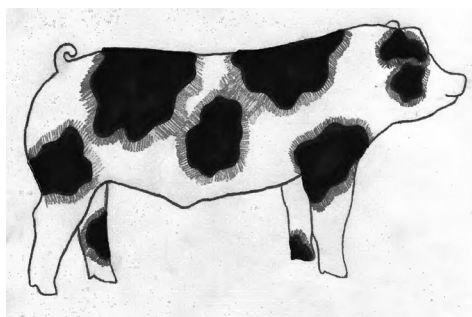


Absolute Disqualification:

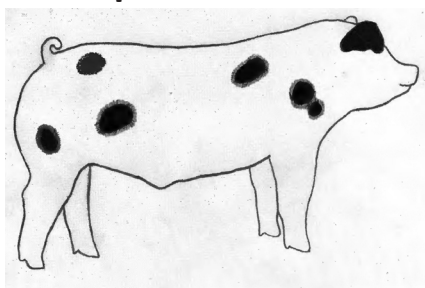


## Spotted

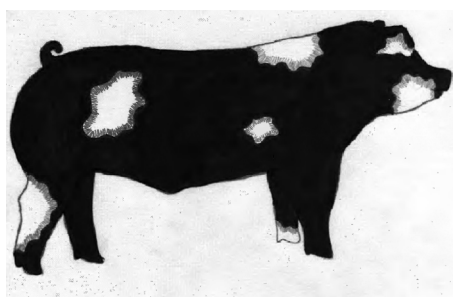
### Ideal:



### Acceptable:

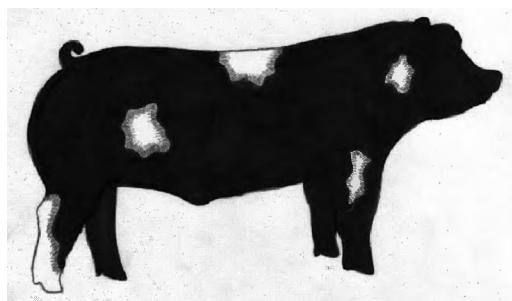


Predominantly white  
with black spots.

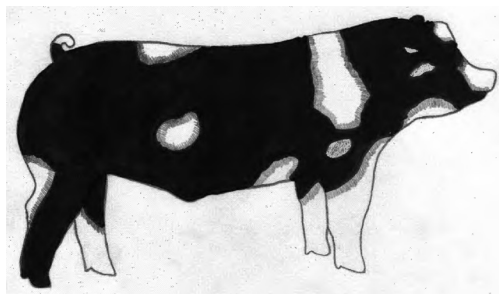


Predominantly black with  
white spots.

### Absolute Disqualification:



Solid black head from  
base of ears forward.



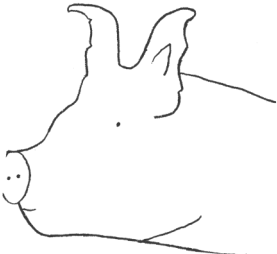
Distinct white belt pattern (hair  
or skin) encircling and extending  
down and onto each shoulder.

**Spotted**

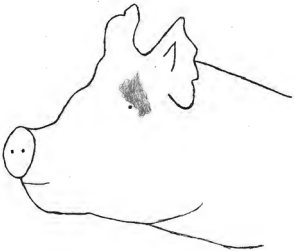
**Ideal:**



**Discriminatory:**



**Absolute Disqualification:**



Images Used within the Wyoming State Fair Swine Classification Guidelines courtesy of the Texas Pork Producers:

Swine breed - Texas pork producers. (n.d.). <https://texaspork.org/wp-content/uploads/2019/10/Swine-Classification-Guidelines.pdf>